



NORTH GLRS

FAITH'S FRIDAY FLASH

VOLUME 1, ISSUE 8 FEBRUARY 29, 2008

FOCUS ON POST SECONDARY CAREER PLANNING/ACTION PLANS

March training sessions will focus on Post Secondary Career Planning; Vocational Assessments; Secondary Redesign updates and "What's Working?" The "What's Working?" session will vary from site to site.

There will be 3 concurrent sessions with teams attending all 3 sessions.

You will hear from different presenters some of the interventions/strategies that have been implemented in their schools and the positive outcomes. You will hear from a presenter regarding Vocational Assessments & Secondary Career Planning. During the Team Planning session, we will review your Action Plan



with Dr. Bost. Teams should come prepared to discuss their Action Plan with her. She will focus on the data which led you to your areas of needs; discuss prioritizing these needs and targeting your student group to plan the implementation stage. We are in the finalization stage of our Action Plans and Dr. Bost will assist us as we "fine tune" our

plans. Coaches have requested lunch time with their teams; please plan accordingly. Please remember to move among your teams.

These next few months will be focused on your data, your prioritized needs, your focus groups for interventions and determining those interventions. Also, your teams should be planning a presentation of the school's Action Plan to the entire staff.

NOTE!!!

- Contact Susan Brozovic with any team member changes, absences or **if you do not have a parent team member. Also, requests for training site changes need to go through Susan.**
- *The website for coaches can be found at www.pioneerresa.org. Please note additions of Implementation Plan and revised Action Plan form and example.*
- *As schools are planning activities for rising 9th graders, this would be an excellent opportunity for your Parent Mentors to work with you on Family Engagement strategies.*
- *Sports always draw parents; what a great opportunity to increase interactions with families!*

CONTACTS

Susan Brozovic
SBrozovic@doe.k12.ga.us

Faith Huff
fhuff@pioneerresa.org
706-540-4848

Patti Solomon
PSolmon@doe.k12.ga.us
404-651-6457

Patricia Davalos
pdavalos@pioneerresa.org
678-936-7025

Debbie Currere
debbianne6@charter.net
770-641-8927

VERY IMPORTANT !

- March 3, 2008 :** Coaches activity logs for February should be completed
- March 5, 2008:** RSVP for March 13th and 14th (email to Faith)
- March 7, 2008:** Updated Electronic Data Probe (email to Faith)
- March 7, 2008:** Elluminate Session/Content Enhancement/Kathy Gast

All March Training Sessions: Updated Action Plan ; Data Probe Summary
Please let me know your dates of your District's Spring Break.

March 14, 2008

Coach Training at Serenbe
9:30-3:00 Pecan Room
Lunch Provided
March 13 Lake House 6:30
Bring your favorite beverage

RSVP by Mar 5th to
fhuff@pioneerresa.org

Please let me know total number of attendees for Mar. 13 & Mar. 14

ESSENTIAL QUESTIONS IN MARCH

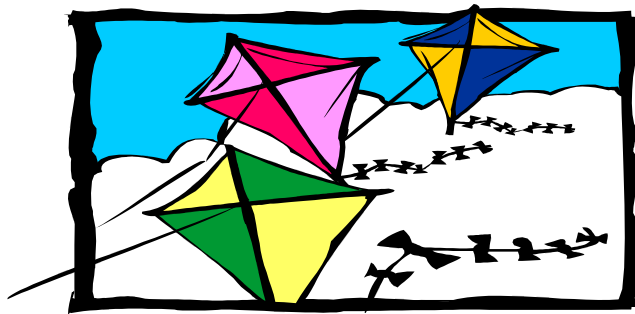
- How are my teams doing?
- Have my teams clearly identified needs based on data?
- Have they prioritized their needs?
(you can't "fix" everything at once!)
- Have they selected strategies/interventions that match their needs?
- What training will be necessary and who will need the training?
- Are specific students/student groups targeted for these strategies/interventions?

MARCH WINDS ARE BLOWING...

OFTEN CHANGE TAKES COURAGE

True courage is like a kite; a contrary **wind** raises it higher.

--John Petit-Senn



YOUR TEAM LEADERSHIP IS SO IMPORTANT AND SO APPRECIATED!