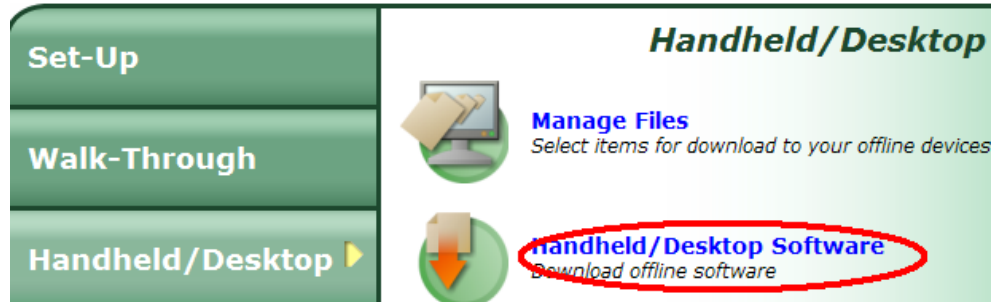
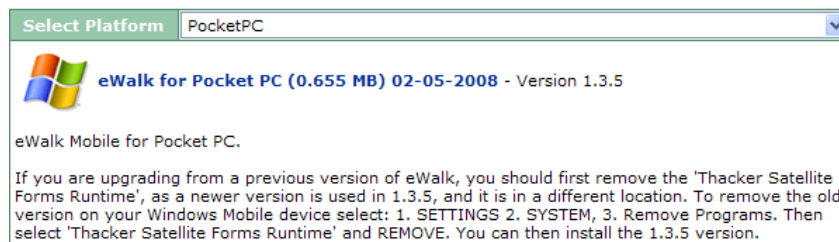


Downloading & installing eWalk for Pocket PC

From the Main eWalk menu select “Handheld/Desktop” and then “Handheld/desktop Software”.



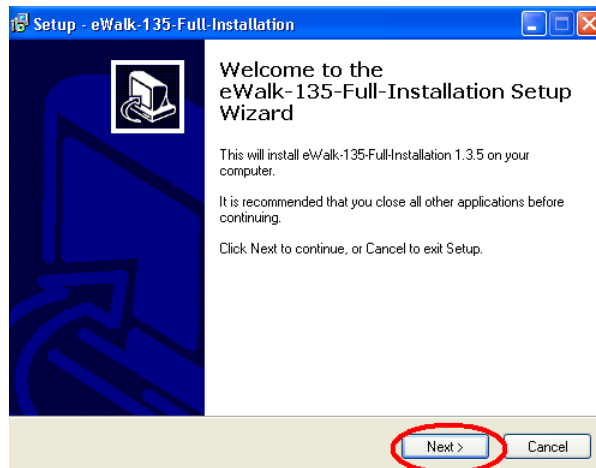
Use the drop down box provided to select our handheld device Pocket PC. Then select the eWalk for Pocket PC link.



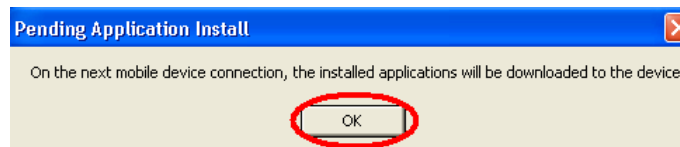
The program will prompt you to run the installer or Save you a location on your computer or network. Select Run to begin the installation.



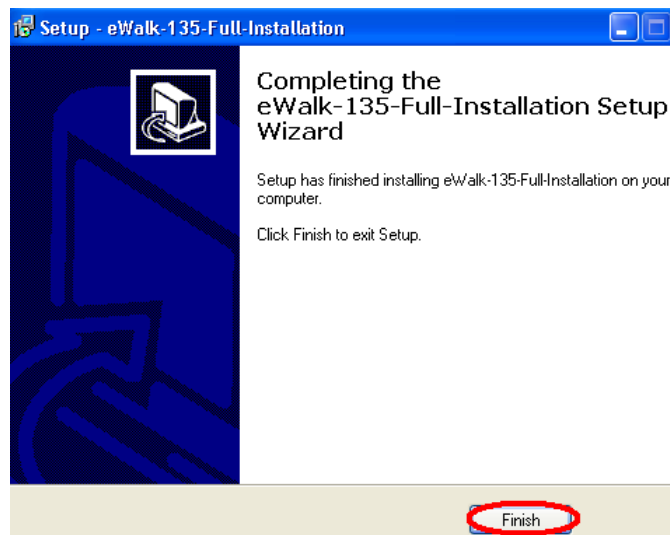
Select Next, then select the radio button “I accept the agreement”, then click next four more times, and then final click the “install” button.



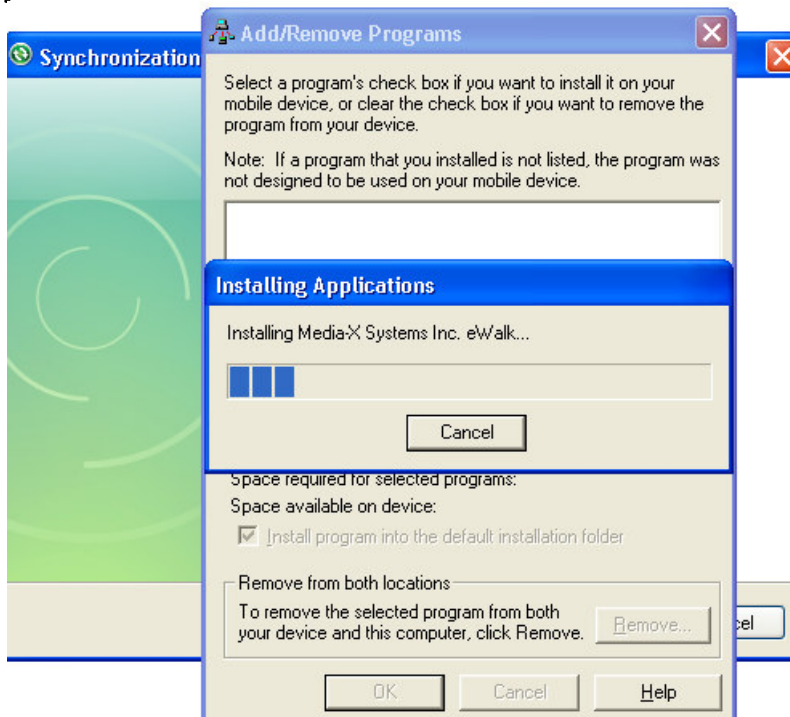
During the install you will get a pop up with the message “On the next mobile device connection, the installed application will be downloaded to the device” Just click “OK”



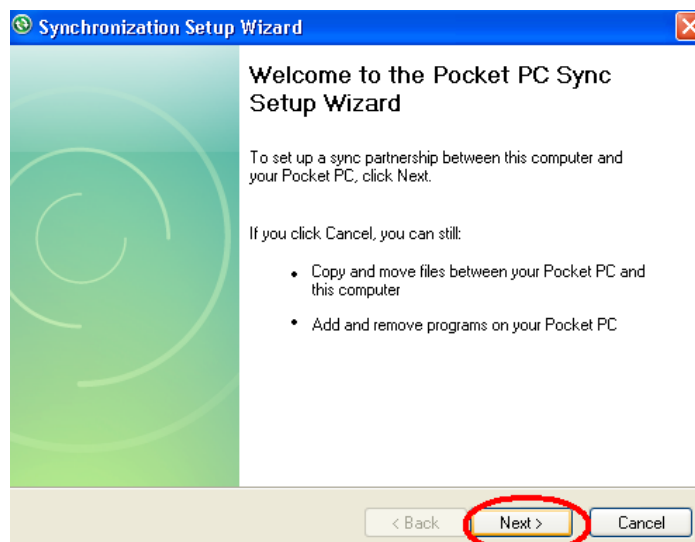
Just click “Finish” on the final box.



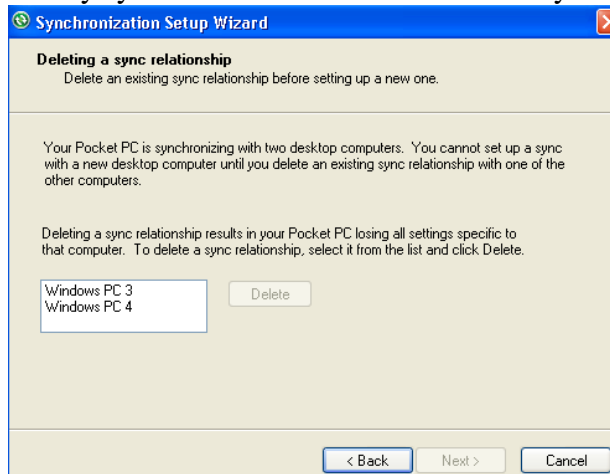
Plug in your Pocket PC device to your PC. You will see several pop up windows being displayed on your PC



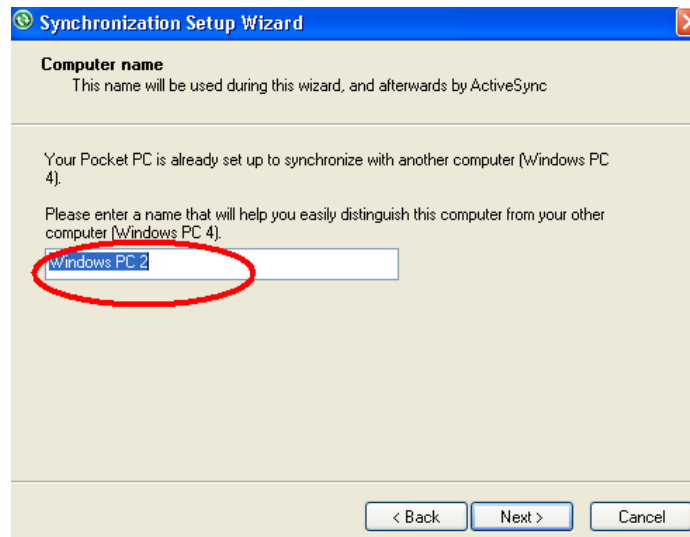
You will now get the Pocket PC setup wizard, please click next.



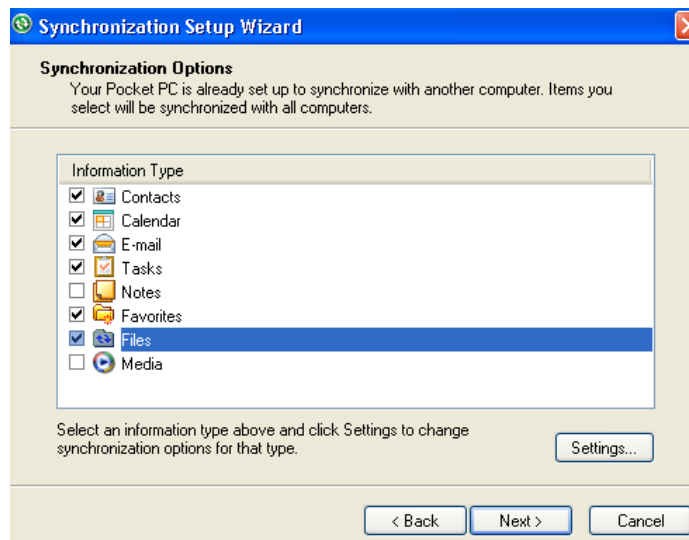
If you get the follow message you can only sync to one PC. So remove of the sync relationships and then click “next”



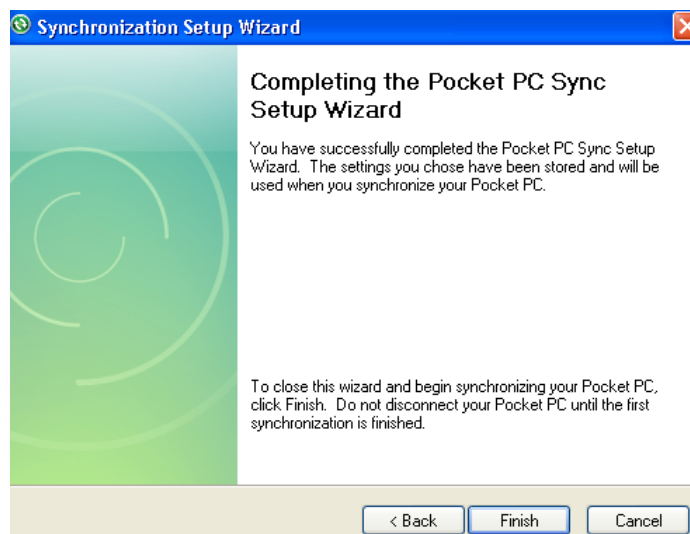
You then should choose a name that will distinguish your computer from another computer.



Now select the PC folders and directories you would like to have synchronized with the Pocket PC.



Then click "Finish" and the system will then save the settings, you are now completed the Pocket PC sync setup.



The ActiveSync will then connect to your Pocket PC and look for any changes.

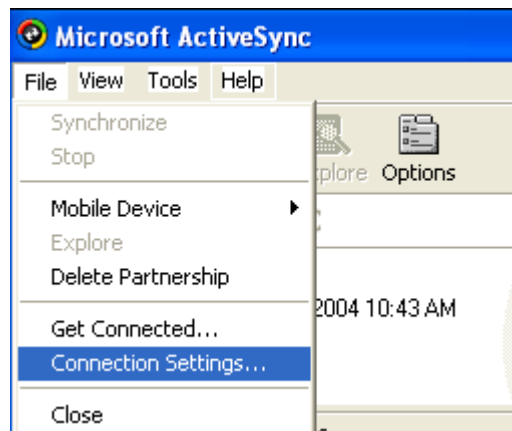


Start eWalk by Selecting Programs and then eWalk on your Pocket PC. You can also add it to your Start Menu or Map it to one of your buttons.



Setting up ActiveSync for Pocket PC

1) Open Microsoft ActiveSync and select **Files** and then **Connection Settings**.



Make certain that the check boxes in the image below are all checked on your configuration



eWalk uses HTTPS to transfer data to and from your Pocket PC. This means that you can only download/upload when:

- a) You have your Pocket PC attached to a PC that is connected to the Internet
- b) You are using WiFi (802.11)
- c) You are using a Pocket PC cell phone.

Once ActiveSync is setup to allow Internet access (step #1 above), you need to configure eWalk on your Pocket PC. This is done in steps 2 and 3.

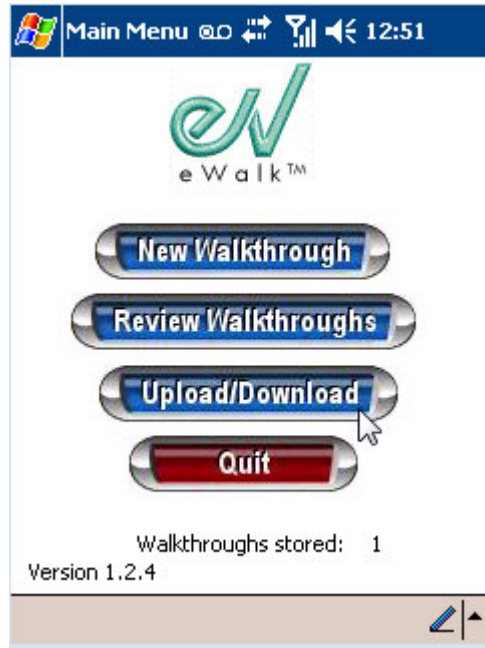
2) Login to your eWalk account on the web and select 'Generate files'. At the lower right of the screen you will see the settings for your Pocket PC.

3) Turn on your Pocket PC and:

- a) select eWalk
- b) from the Menu select Upload/Download.
- c) select 'Setup'
- d) enter the settings as shown in step #2 above.

Pocket PC File Transfer

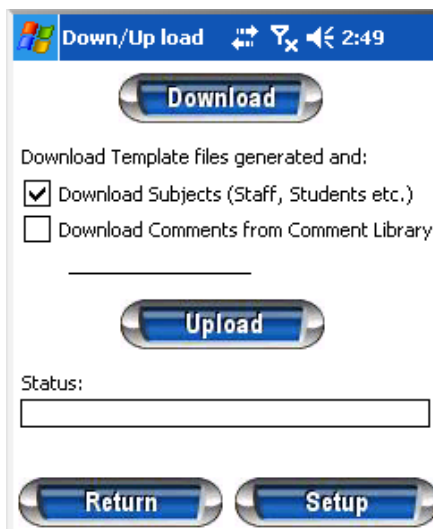
From the eWalk main menu select the Upload/Download button



If you have generated your files on the web you can use this page to complete the transfer of info to your Pocket PC. Use the boxes provided to select how much info you wish to update and click on the Download button.

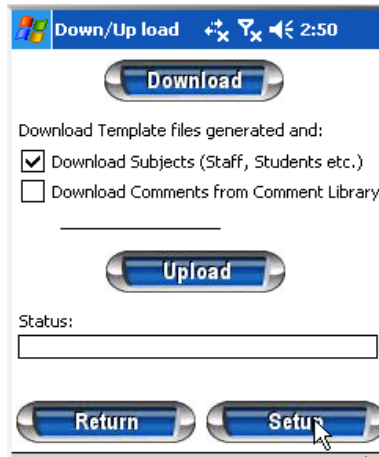
To upload any walkthrough data that has been recorded on your device click on the Upload button.

Your Pocket PC must be connected to your computer.



Setting up your Pocket PC to send and receive data

Before you can successfully transfer information between your handheld and the web you must set up your Pocket PC . To begin, select 'Setup'



Down/Up load 2:50

Download

Download Template files generated and:

Download Subjects (Staff, Students etc.)

Download Comments from Comment Library

Upload

Status:

Return Setup

The setup screen on your Pocket PC will ask you for the information located on the Generate Files page in the web. Enter the information into the correct boxes and then click the back arrow to return to the Setup menu.

NOTE: This information will remain in your Pocket PC unless you reinstall the application.



Set Up 2:54

eWalk Settings for Server

Use HTTPS for secure data transfer

IP Host: mxweb.media-x.com

System ID: 140

User Name: pshuster

Password: xxxxxx Record

Proxy Server used

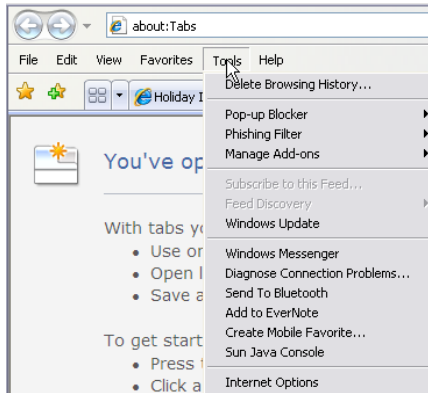
Return

Working with Proxy Servers

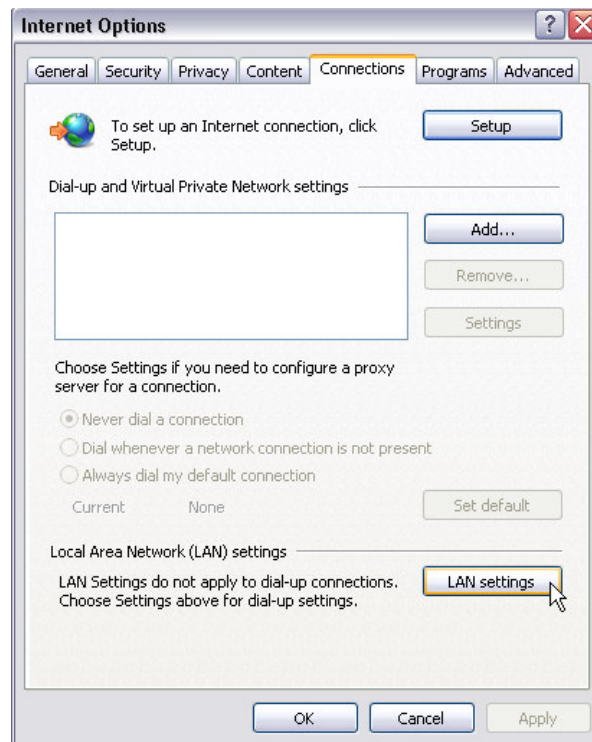
If your Desktop computer connects to the Internet via a Proxy Server, then both the Pocket PC and Internet Explorer must be configured to allow uploading/downloading with the Proxy Server. Method #1 bypasses the proxy server and Method #2 uses it..

Method #1

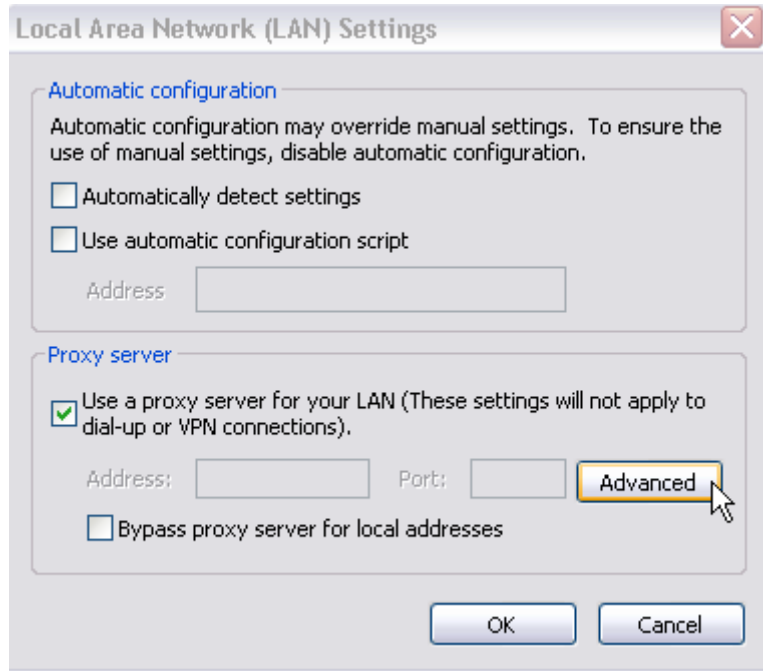
- do not check Proxy Server used on the Pocket PC setup screen
- Start Internet Explorer and select Tools and at the bottom, Internet Options.



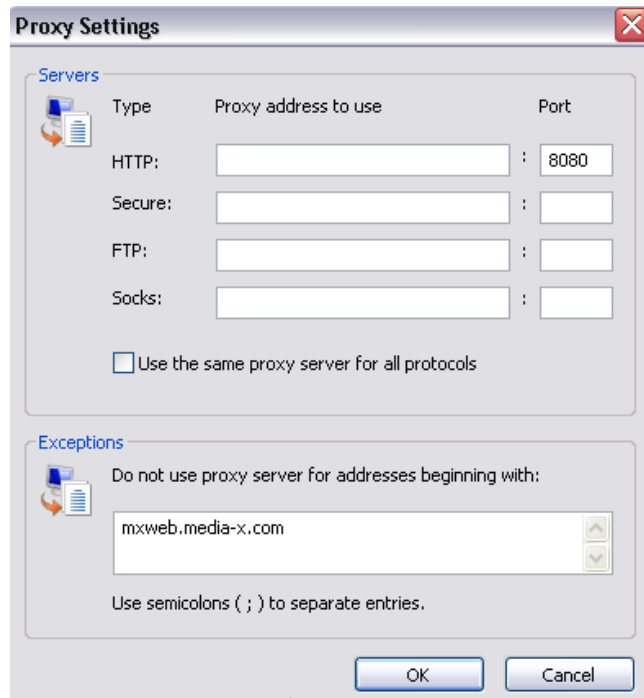
- On the Internet Options menu, select 'Connections' and then 'LAN Settings'



- on the LAN Settings menu check 'Use a proxy server' and then select 'Advanced'



- On the Proxy Settings menu enter 'mxweb.media-x.com' in the Exceptions box as shown below.



This will allow you Pocket PC to transmit data to and from the Internet without having to even use the proxy server.

Method #2

This method must be used if you cannot bypass the proxy server. Instead of filling in the Exceptions box, you fill in the Proxy server information in the 8 boxes (HTTP, Secure, FTP and Socks). Your IT department can give you this information if your Internet Explorer does not already have it filled in.

On your Pocket PC Setup Screen, check 'Proxy server Used'. A Proxy Server Setup button is displayed, and you then select it. This will show a Proxy Server setup screen which has to be filled in with the settings for your proxy server. Once you enter the information, select 'Record' to store the password. Then you can select 'Return'.

The image displays two screenshots of a Pocket PC setup screen. The left screenshot is titled "Set Up" and shows "eWalk Settings for Server". It features a checked box for "Use HTTPS for secure data transfer", fields for IP Host (moxweb.media-x.com), System ID (140), User Name (pshuster), and Password (XXXXXX), and a checked box for "Proxy Server used". A "PROXY SERVER SETUP" button is highlighted. The right screenshot is titled "PROXY Setup" and shows "Settings for Proxy Server" with fields for Proxy Host, Proxy PORT (3128), User Name, and Password, each with a "Record" button. A "Return" button is at the bottom.

Sending and receiving data wirelessly

If you have a Wi-Fi Pocket PC, you can upload/download without connecting to your PC ***providing that you are connected to a wireless connection.***

If you have a Windows Mobile 'smart phone' such as a TREO 'w' or HP Mobile Messenger (series iPaq), you can upload/download with cell phone connectivity if you ***first*** start Internet Explorer, and then have eWalk upload/download. Typically, when in eWalk, and before pressing Upload or Download, you select 'Start – Internet Explorer', and then once connected to the web, do not close Internet Explorer, but select 'Start-eWalk' and the select Upload or Download. When finished data transfer, you can return to Internet Explorer and close it.